

Metabolism of Isolated Fat Cells

I. EFFECTS OF HORMONES ON GLUCOSE METABOLISM AND LIPOLYSIS

MARTIN RODBELL

*From the Laboratory of Nutrition and Endocrinology, National Institute of Arthritis and Metabolic Diseases,
National Institutes of Health, Bethesda 14, Maryland*

(Received for publication, August 5, 1965)

Increased attention has been focused on the metabolism of adipose tissue and its marked sensitivity to various hormones (for reviews, see Vaughan (1) and Jeanrenaud (2)). In an attempt to obtain a homogeneous preparation of fat cells, it was found that if rat adipose tissue is treated with collagenase, fat cells are liberated. Owing to their high fat content, the fat cells can be separated from the more dense stromal-vascular cells by flotation.

The metabolism of glucose and the response to various hormones by free fat cells are reported in this paper.

EXPERIMENTAL PROCEDURES

Male Sprague-Dawley rats (160 to 210 g) were used in these studies and were fed, *ad libitum*, a high carbohydrate diet (3) consisting of: ground whole wheat, 66%; casein, 15%; whole milk powder, 10%; cottonseed oil, 5%; and required vitamins and salts.

Materials—Crystalline zinc insulin was obtained from Eli Lilly (Lot 288614, 26 units per mg). ACTH¹ and Fraction V bovine albumin were Armour products. Purified TSH was furnished by Dr. Peter G. Condliffe and contained 6 units per mg. Dilutions of the hormones were prepared in buffered albumin on the day of the experiment. Collagenase prepared from *C. histolyticum* was obtained from Worthington Biochemical Corporation (Lot 6142-4). Glucose-U-¹⁴C² was obtained from New England Nuclear Corporation.

Preparation of Fat Cells—Plastic or siliconized glass vessels from Clay-Adams, Inc., were used during the preparation and incubation of the fat cells.

Rats were killed by decapitation, the epididymal fat pads were removed and rinsed in 0.85% NaCl solution, and thin distal portions from each pad were cut into three pieces. Up to 1 g of tissue was added to a siliconized 25-ml flask containing 3 ml of albumin-bicarbonate buffer, 10 mg of collagenase, and 3 μ moles of glucose per ml. Incubations were carried out for 1 hour at 37° in a metabolic shaker. The bicarbonate buffer solution, pH 7.4, was prepared according to Cohen (4) with half the suggested concentration of calcium ion and contained 4% Fraction V bovine albumin which had been dialyzed against the bicarbonate buffer. The same buffer was used for the metabolic studies.

The tissue was dispersed into small fragments within 1 hour of incubation with collagenase. Fat cells were liberated from the

tissue fragments by gentle stirring with a rod. Liberation of the cells was manifested by an increased turbidity in the medium. Fragments of tissue still remaining after this treatment were removed with forceps. The suspension of cells was centrifuged in polyethylene centrifuge tubes³ for 1 minute at 400 \times *g*. The fat cells floated to the surface, and the stromal-vascular cells (capillary, endothelial, mast, macrophage, and epithelial cells) were sedimented. The stromal-vascular cells were removed by aspiration, and the fat cells were washed by suspending them in 10 ml of warm (37°) albumin buffer containing the desired concentration of glucose and centrifuging for 1 minute at 400 \times *g*. This procedure was repeated three times. Stromal-vascular cells were absent, by histological examination, from the fat cell preparation after three washes. Fat droplets, which may have been formed from the breakage of the fat cells, floated more rapidly to the surface than the fat cells and were aspirated from the surface, after gently stirring the cell suspension.

For a set of experiments, fat cells were usually obtained from the pooled adipose tissue of three rats. The washed cells were suspended in 15 to 20 ml of albumin-bicarbonate buffer containing a given concentration of glucose, usually 3 μ moles per ml. The triglyceride concentration (fat cell content) was generally between 30 and 40 μ moles of triglyceride (equivalent to about 50 to 60 mg of tissue) per ml of suspension. Just prior to dispensing the cells in the incubation vials, sufficient glucose-U-¹⁴C was added to the suspension to give a final specific activity of about 0.1 μ c per μ mole of glucose.

The following method was used for measuring and dispensing the cells. The cell suspension was swirled to ensure delivery of uniform suspensions of cells and was immediately drawn up into 18 cm of plastic tubing³ attached to a 2-ml calibrated syringe (lubricated to maintain a tight fit) and then discharged into plastic counting vials from the Packard Instrument Company. The volume of tubing was sufficient to contain 0.5 to 1.0 ml of cell suspension, the usual amounts measured. With this procedure, it was possible to dispense, without cell breakage, 0.5 ml of cell suspension into 40 vials within 3 minutes.

After the addition of hormones, etc., the vials were capped with rubber serum stoppers fitted with hanging glass wells purchased from the Kontes Glass Company. The wells contained cylinders of Whatman No. 1 paper rolled from 2- \times 8-cm strips. Unless stated otherwise, incubations were carried out, with shaking, at 37° for 2 hours. The gas phase was 95%

¹ The abbreviations used are: ACTH, corticotropin; TSH, thyroid-stimulating hormone.

² Glucose-U-¹⁴C refers to the uniformly or randomly labeled compound.

³ No. 10 Transflex tubing, Irvington, Plastic Division, Frechold, New Jersey.

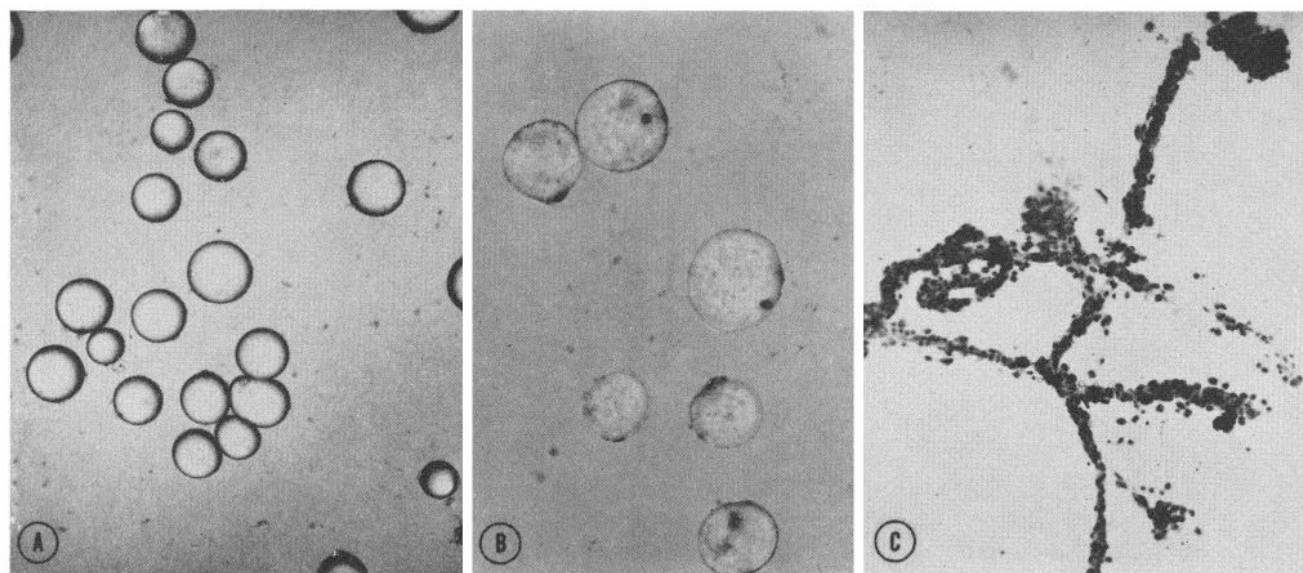


FIG. 1. Photomicrographs of free fat cells and stromal-vascular cells obtained from collagenase-treated rat epididymal adipose tissue. Suspensions of unfixed cells were stained with methylene blue. A, view of fat cells at low magnification (100X). Although

not clearly visible on the photograph, stained nuclei were associated with each sphere. B, fat cells at higher magnification (210X) showing nuclei. C, intact blood vessels and other stromal-vascular cells (25X).

0.2-5% CO₂. At least four replicate flasks were incubated in each experiment.

Analytical Procedures—Radioactivity was determined in a Packard model 314 EX liquid scintillation counter. ¹⁴C lipids and CO₂ were counted in a scintillation solution consisting of 0.4% 2,5-diphenyloxazole and 0.05% *p*-bis-2-(phenyloxazolyl)-benzene in toluene. Bray's scintillation solution (5) was used for counting ¹⁴C-glucose in the incubation medium.

At the end of the incubation period, 0.2 ml of Hyamine-10X purchased from the Packard Instrument Company was injected onto the filter paper and 0.25 ml of 1 N sulfuric acid into the cell suspension. After the flasks were shaken for 15 minutes at room temperature, the paper strips were transferred to 10 ml of scintillation fluid and counted. Two drops of methanol were added to the counting vials to increase the solubility of the Hyamine-CO₂ in the scintillation fluid.

For the determination of ¹⁴C lipids, the cell suspensions were transferred to centrifuge tubes with glass stoppers and extracted with 5 ml of Dole's extraction mixture (6). After the mixture had stood for 15 minutes at room temperature, 3 ml of water and 3 ml of hexane were added, and the phases were allowed to separate. The lower phase was removed by aspiration and the upper phase was washed with 3 ml of water. Portions of the upper phase were analyzed for ester content (7) with tripalmitin as standard, free fatty acids by a slight modification⁴ of the method of Dole and Meinertz (8), and total lipid radioactivity. To determine radioactivity in triglyceride fatty acids, 1 ml of the upper phase was evaporated and the lipid was saponified by refluxing for 1 hour with 2 ml of ethanolic KOH (1.0 ml of saturated KOH per 100 ml of 95% ethanol, freshly prepared). After 2 ml of water were added, the sample was neutralized to a bromocresol green end point and the fatty acids were extracted with 3 ml of hexane. A 2.0-ml aliquot of the latter was evaporated to dryness, and 10 ml of scintillation fluid were added to dissolve

the residue. Fatty acid content was determined by titration (8) and generally agreed with the ester content of the original lipid extract. Since the lipids of adipose tissue are primarily triglycerides (9), the difference in radioactivity found in fatty acids and that in total lipid was assumed to represent radioactivity in the glycerol moiety and is referred to as glyceride-glycerol.

Glucose in the medium was measured, without deproteinization, by the glucose oxidase procedure (10). The quantity of glucose carbon converted to CO₂, glyceride-glycerol, and fatty acids was calculated from the initial specific activity of the glucose in the medium and the quantity of radioactivity in the products. Results are expressed as micromoles of glucose per mmole of triglyceride in the cell suspension.

RESULTS

The low density material released from adipose tissue by collagenase consisted of spheres which contained a nucleus and were 50 to 100 μ in diameter (Fig. 1A and B). The thin cytoplasmic rim usually seen surrounding that fat globule in thin sections of adipose tissue (11), could not be seen in the free fat cell suspensions. The fat cells were freely dispersed in the medium; there was no clumping of the fat cells (Fig. 1A).

The dense material which sedimented after treatment of adipose tissue with collagenase, contained mast cells, macrophages, connective tissue cells, and intact blood vessels and is referred to as stromal-vascular cells. A view of this material is shown in Fig. 1C.

Fat cells incubated in plastic vessels converted 29% of the ¹⁴C-glucose in the medium to CO₂, glyceride-glycerol, and fatty acids (Table I). No change in the gross structure of the cells was observed after 3 hours of incubation. When the cells were incubated in glass vessels, however, only 4% of the ¹⁴C-glucose was converted to the measured products. The loss in metabolic activity was primarily due to the rupture of the cells by incubation in the glass vessels. When the fat cells were homogenized, the fat was released from the cells and formed large droplets

⁴ S. S. Chernick, unpublished procedures.

TABLE I
Glucose metabolism by free fat cells and stromal-vascular cells

| | Incubation vessel | Glucose in medium converted to | | |
|---|----------------------|--------------------------------|--------------------|-------------|
| | | CO ₂ | Glyceride-glycerol | Fatty acids |
| | | % | | |
| Fat cells ^a | Plastic ^b | 9.6 ± 0.2 | 13.2 ± 0.5 | 6.0 ± 0.05 |
| Fat cells ^a | Glass ^c | 2.1 ± 0.5 | 1.2 ± 0.3 | 0.5 ± 0.7 |
| Fat cells, homogenized ^d ... | Plastic | 0 | 0 | 0 |
| Stromal-vascular cells ^e ... | Plastic | <0.1 | 0 | 0 |

^a Fat cells, containing 30 μ moles of triglyceride, were incubated for 2 hours at 37° in 1.0 ml of albumin-bicarbonate buffer, pH 7.4, containing 3 μ moles of glucose-U-¹⁴C per ml. Values are the mean of 4 replications \pm standard error.

^b Plastic counting vials, purchased from the Packard Instrument Company.

^c Erlenmeyer flasks, 25-ml capacity, not siliconized.

^d Fat cells, containing 150 μ moles of triglyceride, were homogenized at room temperature in a Potter-type glass homogenizer fitted with a Teflon plunger.

^e Stromal-vascular cells represent the material sedimented at 400 $\times g$ after 2.5 g of adipose tissue was dispersed with collagenase, as described in "Experimental Procedure." The cells were washed with albumin-bicarbonate buffer, and the entire amount was suspended in 1.0 ml of buffer containing 3 μ moles of glucose-U-¹⁴C per ml. Experimental conditions were the same as those employed with the fat cells.

which bore no resemblance to the fat cell spheres shown in Fig. 1. Nuclei were not associated with the fat droplets. The homogenized preparations did not oxidize glucose or synthesize triglycerides from glucose. These results indicate that the preservation of cellular structure is required for the metabolism of glucose by the fat cells.

Table I also shows that the stromal-vascular cells incubated in plastic vessels oxidized less than 0.1% of the medium glucose and did not synthesize triglycerides. Insulin had no effect on the metabolism of glucose by the stromal-vascular cells (see below).

The quantity of glucose-U-¹⁴C oxidized to CO₂ was proportional to the amount of fat cells (Fig. 2) and oxidation proceeded at a constant rate for at least 3 hours (Fig. 3). Additions of insulin (1 milliunit per ml) caused a 2.5-fold increase in glucose oxidation, which also proceeded at a constant rate for 3 hours.

The effects of insulin on glucose uptake and its metabolism to carbon dioxide, glyceride-glycerol, and fatty acids are shown in Table II. Insulin increased proportionately glucose uptake and metabolism. Approximately 50% of the labeled glucose removed from the medium was accounted for as carbon dioxide and triglyceride. In these experiments, the over-all recovery of radioactivity in CO₂, glyceride-glycerol, and fatty acids was reproducible to within 10% for a set of six replicate flasks. Lactic acid and glycogen formation were not measured but probably accounted for the remainder of the products of glucose metabolism (12).

The oxidation of glucose-U-¹⁴C by the isolated fat cells was increased by adding insulin in amounts as small as 10 micro-units per ml; this was the lowest concentration tested (Fig. 4). A linear dose response was observed in the range of 10 to 100

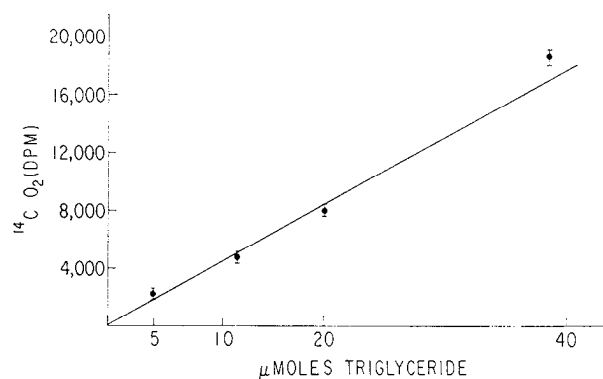


FIG. 2. Relationship between cell triglyceride content and amount of glucose-U-¹⁴C oxidized by isolated fat cells. Each point represents the mean of 4 replications. The vertical bar through each point represents 1 standard error. Cells were incubated for 2 hours at 37° in 0.5 ml of albumin-bicarbonate buffer, pH 7.4, containing 3 μ moles of glucose-U-¹⁴C per ml. Initial specific activity of medium glucose, 203,000 d.p.m. per μ mole.

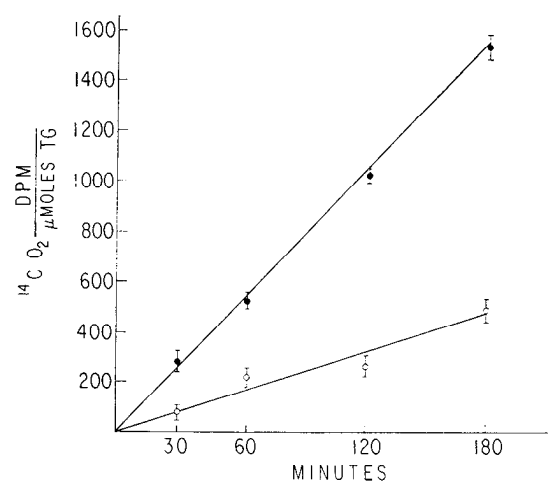


FIG. 3. Time course of oxidation of glucose-U-¹⁴C by isolated fat cells incubated with and without insulin. Each point represents the mean of 5 experiments \pm standard error (vertical bars). \circ , control; \bullet , insulin (1 milliunit per ml). Incubation conditions same as described in Fig. 2. Fat cell concentration, 31 μ moles of triglyceride (TG) per ml.

TABLE II
Effect of insulin added *in vitro* on uptake and metabolism of glucose-U-¹⁴C by isolated fat cells^a

Fat cell suspension, 1 ml (28 μ moles of triglyceride), was incubated for 2 hours at 37° in albumin-bicarbonate buffer, pH 7.4, containing 3 μ moles of glucose-U-¹⁴C per ml; amount of insulin added was 1 milliunit per ml.

| | Glucose uptake | Conversion of glucose-U- ¹⁴ C to | | |
|-------------|----------------|---|--------------------|-------------|
| | | CO ₂ | Glyceride-glycerol | Fatty acids |
| | | μ mole/mole triglyceride | | |
| Control.... | 19 ± 0.4 | 3.2 ± 0.04 | 4.4 ± 0.16 | 2.0 ± 0.04 |
| Insulin.... | 32 ± 0.2 | 5.4 ± 0.08 | 6.4 ± 0.12 | 3.6 ± 0.02 |

^a Mean values obtained from 6 replications \pm standard error.

microunits of insulin per ml at a glucose concentration of 3 μ moles per ml. Increasing the insulin concentration to 1 and to 5 milliunits per ml did not cause a further increase in glucose oxidation. The same results were obtained when fatty acid synthesis was measured.

The effects of increasing the medium glucose concentration from 1 to 16.5 μ moles per ml on glucose metabolism are shown in Fig. 5. Maximal formation of CO_2 and fatty acids was observed when the glucose concentration was increased from 1 to 6.5 μ moles per ml. Glyceride-glycerol formation was not changed by increasing glucose concentrations. At a glucose concentration of 1 μ mole per ml, addition of insulin (1 milliunit per ml) increased the conversion of glucose to CO_2 , glyceride-

glycerol, and fatty acids by about 3- to 6-fold. A further increase in CO_2 and fatty acid formation occurred in response to insulin if the medium glucose concentration was increased from 1 to 3.5 μ moles per ml. Additional glucose in the medium did not change the amount of CO_2 , glyceride-glycerol, and fatty acids that were formed in response to insulin.

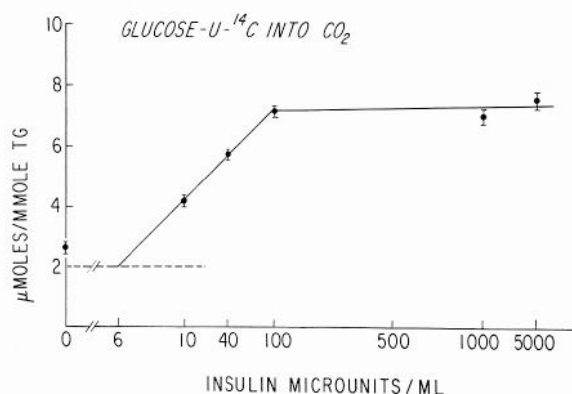


FIG. 4. Effects of varying insulin concentration on glucose-U- ^{14}C oxidation by isolated fat cells incubated for 2 hours. Each point represents the micromoles of glucose carbon oxidized per mmole of triglyceride (mean of 4 experiments). The vertical bars represent 1 standard error. Conditions same as in Fig. 2.

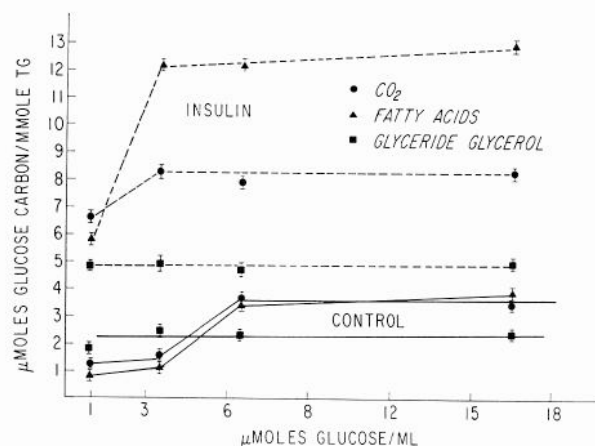


FIG. 5. Patterns of glucose-U- ^{14}C metabolism obtained by increasing glucose concentration in absence and presence of added insulin. Four equal portions of fat cells obtained from epididymal fat pads of 3 rats were washed 3 times with 10 ml of albumin-bicarbonate buffer containing 1.0, 3.5, 6.25, and 16.5 μ moles of glucose per ml, respectively, and finally suspended in 10 ml of buffer containing the same designated glucose concentration. One milliliter of the cell suspension (40 μ moles of triglyceride (TG) per ml) was incubated, in quadruplicate, for 2 hours at 37°. Insulin added was 1 milliunit per ml. Each point represents the mean \pm standard error (vertical bars). Solid line, insulin; dashed line, control.

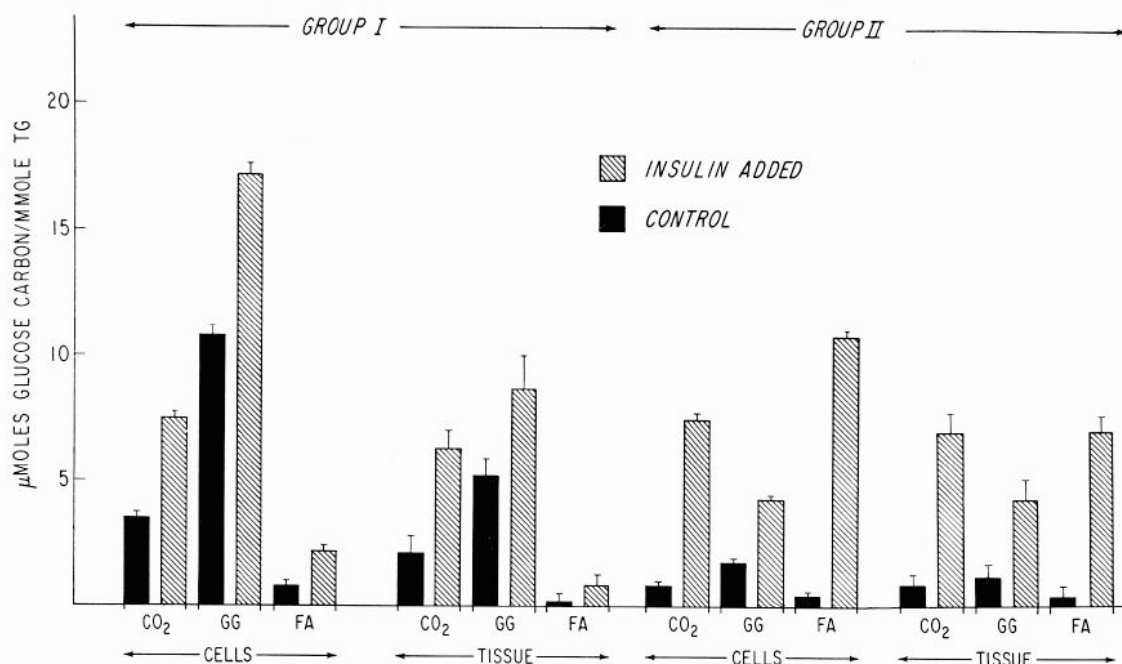


FIG. 6. Metabolism of glucose-U- ^{14}C by fat cells and adipose tissue obtained from fed rats and rats deprived of food. Fat cells and pieces of adipose tissue (45 μ moles of triglyceride per ml) were incubated in 1 ml of albumin-bicarbonate buffer, pH 7.4, for 2 hours at 37°. Glucose concentration was 3 μ moles per ml. Insulin added was 1 milliunit per ml. The data are expressed as the

means of 4 replications for fat cells and for 3 pieces of adipose tissue weighing approximately 50 mg each. Vertical lines at top of each column represent standard error of the mean. Group I refers to rats (190 to 210 g) that were not fed overnight; Group II, rats (160 to 170 g) were fed. TG, triglyceride; GG, glyceride-glycerol; FA, fatty acids.

The effect of insulin on the pattern of glucose metabolism in intact adipose tissue and isolated fat cells is shown in Fig. 6. Two groups of animals (3 rats per group) were used in this study. Rats in Group I (190 to 210 g) were maintained on the high carbohydrate diet for 2 weeks and were deprived of food for 24 hours prior to the experiment. Group II contained rats (160 to 170 g) which were fed the diet for 5 days. For the intact tissue studies, approximately 50 mg of tissue were cut from the distal portion of each fat pad and incubated for 2 hours at 37° in medium containing 3 μ moles of glucose-U-¹⁴C per ml. The two pieces of tissue from each animal were incubated with and without added insulin. The remainder of the adipose tissue from the three animals in each group was pooled and treated with collagenase for 1 hour, and the fat cells were isolated in the usual manner. The fat cells were incubated under the same conditions as described for the intact tissue.

In contrast to the results obtained with the isolated fat cells, the intact adipose tissues indicated a larger variation in the quantity of glucose converted to CO₂, glyceride-glycerol, and fatty acids. This was particularly noticeable when insulin was added to the medium. Although there appeared to be less glucose metabolized by the intact tissue, the difference was not statistically significant.

The "pattern" of glucose metabolism (glucose to CO₂, glyceride-glycerol, and fatty acids) in the tissue and free fat cells was similar in each group of rats. The cells and tissue from the fed rats (Group II), had a lower basal level of glucose metabolism and a larger percentage of conversion of glucose to CO₂ and fatty acids in response to insulin than those from fasted rats.

Several other hormones were examined for their effects on glucose metabolism and fatty acid release by free fat cells. The effects on glucose metabolism are shown in Table III. Oxytocin, like insulin, stimulated the formation of CO₂, glyceride-glycerol, and fatty acids from labeled glucose. The minimal effective concentration for the oxytocin effect was 0.2 μ g per ml. Addition of ACTH, TSH, and epinephrine also increased the formation of CO₂ and glyceride-glycerol from glucose, but, unlike insulin and oxytocin, depressed fatty acid synthesis.

TABLE III

Effects of various hormones on glucose-U-¹⁴C metabolism by isolated fat cells

| Additions | Conversion of glucose-U- ¹⁴ C to ^a | | |
|-------------------------------|--|--------------------|-----------------|
| | CO ₂ | Glyceride-glycerol | Fatty acids |
| | μ mole/mole triglyceride | | |
| None | 1.68 \pm 0.18 | 1.86 \pm 0.24 | 2.40 \pm 0.12 |
| Insulin, 0.02 μ g per ml | 5.13 \pm 0.24 | 7.08 \pm 0.14 | 5.70 \pm 0.09 |
| Oxytocin, 0.2 μ g per ml | 3.66 \pm 0.36 | 3.48 \pm 0.48 | 3.54 \pm 0.24 |
| TSH, 1.0 μ g per ml | 2.66 \pm 0.36 | 6.06 \pm 0.66 | 1.62 \pm 0.12 |
| ACTH, 1.2 μ g per ml | 3.48 \pm 0.42 | 8.46 \pm 0.42 | 1.56 \pm 0.12 |
| Epinephrine, 1 μ g per ml | 4.44 \pm 0.54 | 7.20 \pm 0.54 | 1.86 \pm 0.12 |

^a Mean \pm standard error for 4 replications. 1.0 ml of cell suspension (cell triglyceride = 40 μ moles) incubated for 2 hours at 37° in albumin-bicarbonate buffer, pH 7.4, containing 3 μ moles of glucose-U-¹⁴C per ml.

TABLE IV
Change in free fatty acid content of fat cells and medium in response to various hormones

| Additions ^a | Net change in free fatty acids ^b |
|------------------------|---|
| | μ eq/mmoles triglyceride |
| None | 1.6 \pm 0.5 |
| Insulin | -3.4 \pm 0.5 |
| Oxytocin | -2.0 \pm 0.7 ^c |
| TSH | 40.5 \pm 6.0 |
| Epinephrine | 73.8 \pm 6.0 |
| ACTH | 54.0 \pm 2.0 |

^a Same concentrations of hormones, cells, and incubation conditions as described in Table III. Initial free fatty acid concentration in medium, 0.2 μ eq per ml.

^b Mean of 4 replications \pm standard error. Values are final minus zero time free fatty acid content.

^c Not significantly different from control; $>0.05 <0.10$.

ACTH, TSH, and epinephrine stimulated the release of free fatty acids by the isolated fat cells (Table IV). Insulin caused a net reduction in the free fatty acid content of the cells and medium; oxytocin did not have a significant effect.

The cells used for determining the effects of insulin, oxytocin, and the three lipolytic hormones on both glucose metabolism and fatty acid release were obtained from pooled adipose tissue of three rats. The amount of cells obtained from this quantity of tissue was sufficient to measure each parameter in quadruplicate.

DISCUSSION

These results indicate that fat cells separated from adipose tissue maintain the intrinsic metabolic characteristics of this tissue. The similarity in the patterns of glucose metabolism (CO₂, glyceride-glycerol, and fatty acid formation) by both isolated fat cells and by intact adipose tissue indicates that the major pathways of glucose metabolism have been preserved in the isolated cells. The isolated fat cells account for essentially all of the glucose metabolism observed in adipose tissue.

The dependence of CO₂ and fatty acid synthesis on the medium glucose concentration in isolated fat cells has also been found in studies with epididymal fat pads (13). Glyceride-glycerol formation was unaffected by increasing the medium glucose concentration. This has also been observed with intact tissue (13, 14) and probably reflects the relatively decreased availability of substrate to the Embden-Meyerhof pathway as more substrate becomes available to the other pathways. In this regard, the quantity of glucose available for phosphorylation intracellularly was strongly dependent on the presence of insulin as evidenced by the finding that an increased glucose gradient in the medium was not sufficient, at least at concentrations from 20 to 200 mg/100 ml, to cause an elevation of glucose metabolism to the levels attained with insulin at low concentrations. Studies with epididymal adipose tissue have shown that increasing glucose concentrations to 2000 mg/100 ml simulates the effect of insulin on fatty acid synthesis and CO₂ formation in the presence of low glucose concentrations (13, 14).

In view of the exquisite sensitivity of rat adipose tissue to insulin, it was of particular interest to find that the free fat cells responded to insulin over the same dose response range as that

reported for intact adipose tissue (15, 16). The magnitude of the insulin effect on glucose metabolism in isolated cells was as great as that in the tissue. These findings suggest that the isolated fat cells may be useful for insulin assay studies.

Hormones other than insulin also increased the metabolism of glucose by the fat cells. The insulin-like effect of oxytocin on glucose metabolism may be related to the disulfide bridge which is common to both hormones, as suggested by Pittman *et al.* (17) in their studies with adipose tissue. However, insulin at 0.1 the concentration was more effective than oxytocin. The effects of lipolytic hormones on glucose metabolism and lipolysis in the free fat cells were the same as those observed in intact adipose tissue (ACTH (12, 18–21); TSH (19, 22); and epinephrine (12, 17, 23–27)).

SUMMARY

Studies were made on the metabolism of isolated fat cells and stromal-vascular cells prepared by collagenase treatment of rat epididymal adipose tissue.

The isolated fat cells metabolized glucose by the same pathways as intact adipose tissue and accounted for essentially all of the glucose metabolism observed in this tissue. Free fat cells also maintained the different metabolic characteristics observed in adipose tissue from fasting and fed rats.

Increasing the medium glucose concentration to a maximal level of 6.5 μ moles per ml stimulated the formation of CO₂ and fatty acids from glucose. Insulin caused a further 3-fold increase in the uptake of glucose and its utilization to CO₂, glyceride-glycerol, and fatty acids. As little as 10 microunits of insulin per ml stimulated glucose metabolism by free fat cells; the insulin dose response range was 10 to 100 microunits per ml.

Oxytocin, at 10 times the maximal effective concentration of insulin, caused an insulin-like effect on the metabolism of glucose by free fat cells. Corticotropin, thyroid-stimulating hormone, and epinephrine stimulated the conversion of glucose to CO₂ and glyceride-glycerol and the release of free fatty acids; they suppressed fatty acid synthesis from glucose. Insulin, but not oxytocin, caused a net disappearance of free fatty acids from medium and cells.

It is concluded that isolated fat cells retain the ability to metabolize both glucose and triglycerides and respond to several hormones that have been shown to affect the metabolism of adipose tissue.

Acknowledgments—I would like to express my appreciation for the excellent technical assistance given by Miss Ann Butler during the course of this study.

REFERENCES

1. VAUGHAN, M., *J. Lipid Research*, **2**, 293 (1961).
2. JEANRENAUD, B., *Metabolism*, **10**, 535 (1961).
3. SCOW, R. O., *Am. J. Physiol.*, **173**, 199 (1953).
4. COHEN, P. P., in W. W. UMBREIT, R. H. BURRIS, AND J. F. STAUFFER (Editors), *Manometric techniques and tissue metabolism*, Ed. 2, Burgess Publishing Co., Minneapolis, 1951, p. 119.
5. BRAY, G. A., *Anal. Chem.*, **1**, 279 (1960).
6. DOLE, V. P., *J. Clin. Invest.*, **35**, 150 (1956).
7. RAPPORT, M. M., AND ALONZO, N., *J. Biol. Chem.*, **217**, 193 (1955).
8. DOLE, V. P., AND MEINERTZ, H., *J. Biol. Chem.*, **235**, 2595 (1960).
9. HIRSCH, J., FARGUHAR, J. W., AHREN, E. H., PETERSON, M. L., AND STOFFEL, W., *Am. J. Clin. Nutrition*, **8**, 499 (1960).
10. FALES, F. W., RUSSELL, J. A., AND FAIN, J. N., *Clin. Chem.*, **7**, 289 (1961).
11. GERSH, I., AND STILL, M. A., *J. Exptl. Med.*, **81**, 219 (1945).
12. LYNN, S. W., MACLEOD, R. M., AND BROWN, R. H., *J. Biol. Chem.*, **235**, 1904 (1960).
13. JEANRENAUD, B., AND RENOLD, A. E., *J. Biol. Chem.*, **234**, 3082 (1959).
14. LEONARDS, J. R., AND LANDEAU, B. R., *Arch. Biochem. Biophys.*, **91**, 194 (1960).
15. BEIGELMAN, P. M., *Metabolism*, **11**, 1315 (1962).
16. BALL, E. G., MARTIN, D. B., AND COOPER, O., *J. Biol. Chem.*, **234**, 774 (1959).
17. PITTMAN, J. A., BOSHELL, B. R., WILLIAMS, B. H., HAMMER, D., AND HILL, P., *Biochem. and Biophys. Research Commun.*, **6**, 29 (1961).
18. CAHILL, G. F., JR., LEBOEUF, B., AND FLINN, R. B., *J. Biol. Chem.*, **235**, 1246 (1960).
19. LEBOEUF, B., AND CAHILL, G. F., JR., *J. Biol. Chem.*, **236**, 41 (1961).
20. WHITE, J. E., AND ENGEL, F. L., *J. Clin. Invest.*, **37**, 1556 (1958).
21. RABEN, M. S., AND HOLLENBERG, C. H., *J. Clin. Invest.*, **38**, 1032 (1959).
22. FREINKEL, N., *J. Clin. Invest.*, **40**, 476 (1961).
23. HAGEN, J. H., AND BALL, E. G., *J. Biol. Chem.*, **235**, 1545 (1960).
24. STEINBERG, D., VAUGHAN, M., AND MARGOLIS, S., *J. Biol. Chem.*, **235**, PC38 (1960).
25. GORDON, R. S., AND CHERKES, A., *Proc. Soc. Exptl. Biol. Med.*, **97**, 150 (1958).
26. WHITE, J. E., AND ENGEL, F. L., *Proc. Soc. Exptl. Biol. Med.*, **99**, 375 (1958).
27. WADSTROM, L. B., *Nature*, **179**, 259 (1957).