



Separate search terms with commas

Search

[Browse](#) -

[Sign Out](#)

Isolation of Valvular Endothelial Cells

Russell A. Gould (/author/Russell+A._Gould), Jonathan T. Butcher (/author/Jonathan+T._Butcher)

Department of Biomedical Engineering, **Cornell University** (/institutions/NA-north-america/US-united-states/NY-new-york/24763-cornell-university)



Video Article Chapters

- 0:05 Title
- 1:13 Introduction
- 1:42 Isolation of Heart Valve Leaflets
- 3:03 Isolation of Endothelial Layer
- 5:22 Isolation of Side Specific Endothelial Layer
- 8:03 Isolation of Interstitial Cells
- 9:07 Isolation of Valvular Endothelial Cells Representative Images
- 10:30 Conclusion

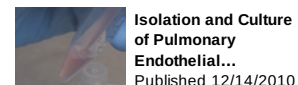
You have **full access** to this article through .

0

Related Videos



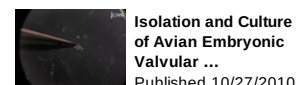
Isolation of Rat Portal Fibroblasts by In...
Published 6/29/2012



Isolation and Culture of Pulmonary Endothelial...
Published 12/14/2010



Design of a Cyclic Pressure Bioreactor for the...
Published 8/23/2011



Isolation and Culture of Avian Embryonic Valvular ...
Published 10/27/2010

Cite this Article

Gould, R. A., Butcher, J. T. Isolation of Valvular Endothelial Cells. *J. Vis. Exp.* (46), e2158, doi:10.3791/2158 (2010).

Abstract

Heart valves are solely responsible for maintaining unidirectional blood flow through the cardiovascular system. These thin, fibrous tissues are subjected to significant mechanical stresses as they open and close several billion times over a lifespan. The incredible endurance of these tissues is due to the resident valvular endothelial (VEC) and interstitial cells (VIC) that constantly repair and remodel in response to local mechanical and biological signals. Only recently have we begun to understand the unique behaviors of these cells, for which *in vitro* experimentation has played a key role. Particularly challenging is the isolation and culture of VEC. Special care must be used from the moment the tissue is removed from the host through final plating. Here we present protocols for direct isolation, side specific isolation, culture, and verification of pure populations of VEC. We use enzymatic digestion followed by a gentle swab scraping technique to dislodge only surface cells. These cells are then collected into a tube and centrifuged into a pellet. The pellet is then resuspended and plated into culture flasks pre-coated with collagen I matrix. VEC phenotype is confirmed by

Download

EndNote, RefWorks, Reference Manager, ProCite
(/legacy/GetRIS.php?id=2158)

JoVE PDF Article (/pdf/2158)

Materials List (/pdf-materials/2158)

XML File (/pdf/default.aspx?ID=2158)

Information

Date Published	12/29/2010
JoVE Section	General (/general)
JoVE Issue	46 (/archive/46)
Comments	0
View Count	13,893 (Details...)
DOI	doi:10.3791/2158 (http://dx.doi.org/10.3791/2158)

contact inhibited growth and the expression of endothelial specific markers such as PECAM1 (CD31), Von Willebrand Factor (vWF), and negative expression of alpha-smooth muscle actin (α -SMA). The functional characteristics of VEC are associated with high levels of acetylated LDL. Unlike vascular endothelial cells, VEC have the unique capacity to transform into mesenchyme, which normally occurs during embryonic valve formation¹. This can also occur during significantly prolonged post confluent *in vitro* culture, so care should be made to passage at or near confluence. After VEC isolation, pure populations of VIC can then be easily acquired.

Protocol

1. Preparation

1. Autoclave in a covered instrument tray the following items:
1. Serrated tissue forceps - For handling the leaflet tissue

2. Tissue scissors (8 cm) - For trimming leaflet tissue and cusps

3. Cotton Swabs - For isolating the endothelial layer from the leaflet or cusp
2. Make sterile collagenase solution
1. Add 4.0 grams of powdered DMEM to 250 mL of 18 M Ω water.

2. Add 1.11 grams of sodium bicarbonate.

3. Add (600 U/mL) 180,000 units of collagenase.

4. Add 1% (3mL) Penicillin/Streptomycin.

5. Adjust the pH of the solution to 7.2.

6. Bring the solution up to 270 mL.

7. Sterilize the solution by passing through a 0.2 μ m filter.

8. Add 10% (30mL) of sterile fetal bovine serum.
3. Make sterile endothelial cell medium
1. Add 6.7 grams of powdered DMEM to 400 mL of 18 M Ω water.

2. Add 1.85 grams of sodium bicarbonate.

3. Add (50 U/mL) 25,000 units of heparin.

4. Add 1% (5mL) Penicillin/Streptomycin.

5. Adjust the pH of the solution to 7.2.

6. Bring the solution up to 450 mL.

7. Sterilize the solution by passing through a 0.2 μ m filter.

8. Add 10% (50mL) of sterile fetal bovine serum.
4. Make sterile interstitial cell medium
1. Add 13.37 grams of powdered DMEM to 800 mL of 18 M Ω water.

2. Add 3.7 grams of sodium bicarbonate.

3. Add 1% (10mL) Penicillin/Streptomycin.

4. Adjust the pH of the solution to 7.2.

5. Bring the solution up to 900 mL.

Keywords

Cellular Biology
(/keyword/cellular+biology), Issue 46
(/archive/46), Endothelial Cell
(/keyword/endothelial+cell), Side Specific
(/keyword/side+specific), Isolation
(/keyword/isolation), Aortic Heart Valve
(/keyword/aortic+heart+valve), Fibrosa
(/keyword/fibrosa), Ventricularis
(/keyword/ventricularis), Enzymatic
Digestion
(/keyword/enzymatic+digestion)

Translate this page to:

Choose Language...

Navigate this Article

- Cite this article
- Abstract
- Protocol
- Discussion
- Disclosures
- Acknowledgements
- Materials
- References
- Ask the author
- Top of page

6. Sterilize the solution by passing through a 0.2 μm filter.
7. Add 10% (100mL) of sterile bovine serum.

2. Isolation of Heart Valve Leaflets

1. Excise the aortic root immediately and aseptically from the heart after sacrifice.
2. Thoroughly rinse the aortic root of blood with cold sterile DPBS. It is imperative to remove all blood components as soon as possible to limit VEC death and bacterial contamination. Antibiotics and antimycotics are not advised at this stage since they are potentially harmful to the VEC.
3. Isolate valve leaflets (3 per valve) directly from the root and place in a sterile 15 mL conical tube filled with 12 mL cold DPBS. Shake several times to remove debris and refill with fresh DPBS.
4. Transport back to the lab on ice.
5. Upon arrival at the laboratory, place the container with the tissue under the sterile hood.

3. Isolation of Endothelial Layer

1. Fill a sterile 35mm dish with 3mL of cold collagenase solution per valve (3 leaflets).
2. Place all three leaflets from the 15 mL tube into the dish filled with the collagenase solution.
3. Incubate the tissue for 5-10 minutes at 37°C.
4. Gently remove the endothelial layer by rotating a dry sterile swab onto the surface of the leaflet. The direction of rotation and amount of shear applied is critical for the purity of your sample. The rotation of the swab should be in an opposite direction to linear motion of your hand creating a controlled shear. This shear is what lifts the endothelial cells from the tissue. The amount of force applied should be enough to feel the resistance of the tissue but, not penetrate the basement membrane.
5. Occasionally, dab the swab within the collagenase solution to dislodge cells from the tip fibers. After swabbing is complete, the texture of the endothelial layer should feel slightly smoother than before.
6. Collect the cell suspension/collagenase and transfer to a new sterile 15mL tube.
7. Centrifuge the tubes at 1000 rpm for 5 minutes to pellet any isolated cells and aspirate supernatant. If isolating interstitial cells as well, perform that protocol while these cells are being centrifuged.
8. Add 3 mL of endothelial porcine medium to the 15 mL tubes, centrifuge a second time, and aspirate media. This second centrifugation helps filter some of the unwanted material such as tip fibers.
9. Re-suspend the centrifuged endothelial cells in 5 mL of endothelial porcine medium and plate the cells in a pre-coated T-25 flask with collagen (use 1 flask per centrifuge tube).
10. Let the cells grow at least 2-3 days before changing the endothelial medium. This helps the cells recover and divide since the isolation process is fairly harsh and the cell yield may be low. It is critical to passage cells near confluence since contact inhibition could lead to cell transformation.

4. Preparation of 60 mm Culture Dish for Side Specific Isolation

1. Line the 60 mm glass petri dishes with aluminum foil (2 glass dishes per leaflet). The aluminum foil helps to remove the paraffin, so that the glass petri dish can be reused for other isolations.
2. Place paraffin beads within the dishes, about half full, and cover for autoclaving.
3. Once the autoclaving is complete and paraffin is melted, move the dish ensemble to a cool flat surface. As the paraffin cools, it will harden and create a layer that will support needle punctures.
4. After 30 minutes, the sterilized dish can then be used as an isolation chamber to immobilize the leaflet tissue.

5. Isolation of Side Specific Endothelial Layer

1. Remove the leaflets from the 15mL tubes and place on prepared 60mm culture dish for side specific isolation.
2. Manipulate the leaflet so that the ventricularis side is face down on the paraffin surface leaving the fibrosa side exposed. Pin the edges of the leaflet to expose the endothelial layer.
3. Place a few drops of cold collagenase on each (upwards-facing) endothelial surface and incubate the tissue for 5-10 minutes at 37°C.
4. As before, gently remove the endothelial layer by rotating a dry sterile swab onto the surface of the leaflet. The direction of rotation and amount of shear applied is critical for the purity of your sample. The rotation of the swab should be in an opposite direction to linear motion of your hand creating a controlled shear. This shear is what lifts the endothelial cells from the tissue and nothing else. The amount of force applied should be enough to feel the resistance of the tissue but, does not penetrate within the tissue.
5. Occasionally, dab the swab within the collagenase solution to dislodge cells from the tip fibers. After swabbing is complete, the texture of the endothelial layer should feel slightly smoother than before.
6. Collect the cell suspension/collagenase and transfer to a new sterile 15mL tube. Indicate side specificity on label (leaflets from the same valve can be pooled together).
7. Transfer the leaflets to a new culture dish so that the ventricularis side is now exposed and repeat steps (5.3-5.6).
8. Once all cell suspension/collagenase is collected, centrifuge the tubes at 1000 rpm for 5minutes to pellet any isolated cells and aspirate supernatant. If isolating interstitial cells as well, perform that protocol while these cells are being centrifuged.
9. Add 3 mL of endothelial porcine medium to the tubes, centrifuge a second time, and aspirate media. This second centrifugation helps filter some of the unwanted material such as tip fibers.
10. Re-suspend the centrifuged endothelial cells in 5 mL of endothelial porcine medium and plate the cells in a pre-coated T-25 flask with collagen (use 1 flask per centrifuge tube).
11. Let the cells grow at least 2-3 days before changing the endothelial medium. This helps the cells recover and divide since the isolation process is fairly harsh. If you notice the yield to be very low, consider moving to a smaller flask or well plate since cell-cell adhesion promotes cell growth. Remember to passage near confluence since contact inhibition could lead to cell transformation.

6. Isolation of Interstitial Cells

1. Fill a sterile 15 mL centrifuge tube with 10 mL of collagenase solution per valve (3 leaflets).
2. After swabbing the leaflets of endothelial cells, immediately place them in the appropriate 15mL tube with the collagenase solution.
3. Incubate for approximately 12 to 18 hours (agitate gently if desired).
4. Mix the degraded tissue gently with a serological pipette until cell suspension/collagenase becomes homogenized. This homogenization helps break up the tissue and release the interstitial cells.
5. Centrifuge the digested tissue for 5 minutes at 1000 rpm and aspirate the supernatant.
6. Add 5 mL interstitial porcine medium to the 15mL tubes, centrifuge a second time, and aspirate supernate.
7. Re-suspend the centrifuged endothelial cells in 5 mL of interstitial porcine medium and plate the cells in a T-75 flask (use 1 flask per centrifuge tube).
8. Let the cells grow at least 1-2 days before changing the interstitial cell medium. There will be much more

tissue debris than with the endothelial cells but, that is expected. The cells should also grow to confluence faster than the endothelial cells because of the cell yield and their nature.

7. Representative Images

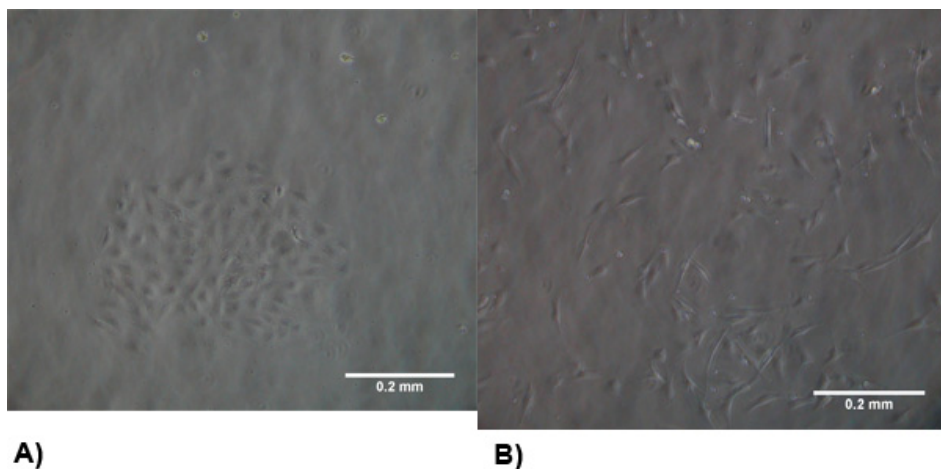


Figure 1. The morphology of isolated cells at 2-3 days post isolation. (A) VEC exhibit a typical endothelial morphology and form clusters to promote growth. (B) VIC morphology is similar to myofibroblasts which are generally spindle shaped and spread evenly throughout the flask.

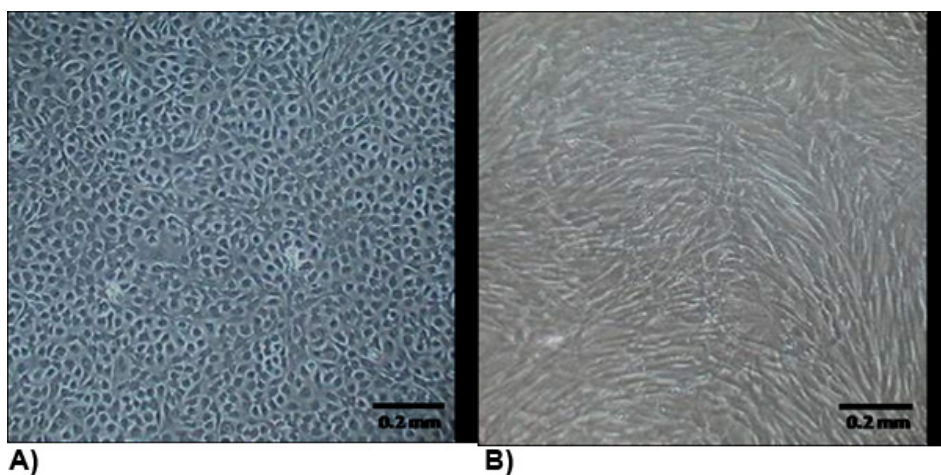


Figure 2. The morphology of isolated cells at confluency. (A) VEC exhibit a typical endothelial morphology which are generally cobblestone and growth contact inhibited. (B) VIC morphology is similar to myofibroblasts which are generally spindle shaped and not growth contact inhibited.

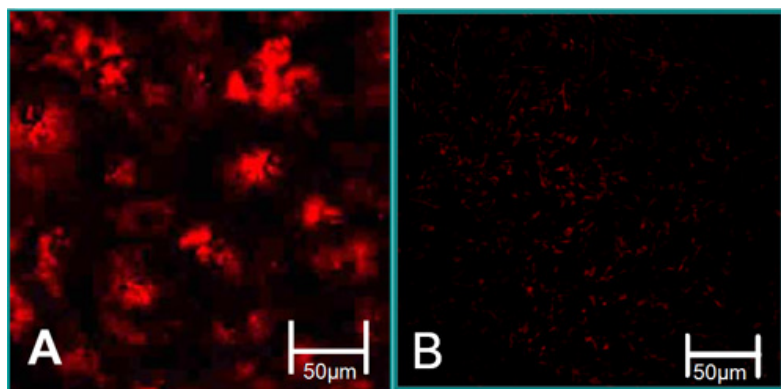


Figure 3. The function characteristics of isolated cells⁶. (A) VEC are associated with high levels of acetylated LDL uptake (red). (B) VIC are associated with low levels of acetylated LDL uptake.

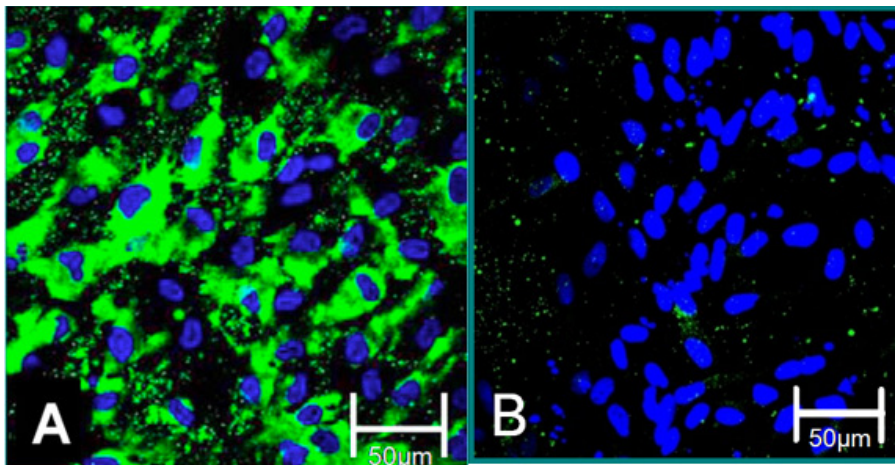


Figure 4. Cellular markers of isolated cells ⁶. (A) VEC phenotype is contributed to positive staining for Von Willebrand Factor (green), blue (nuclei). (B) VIC phenotype is contributed to negative staining for Von Willebrand Factor.

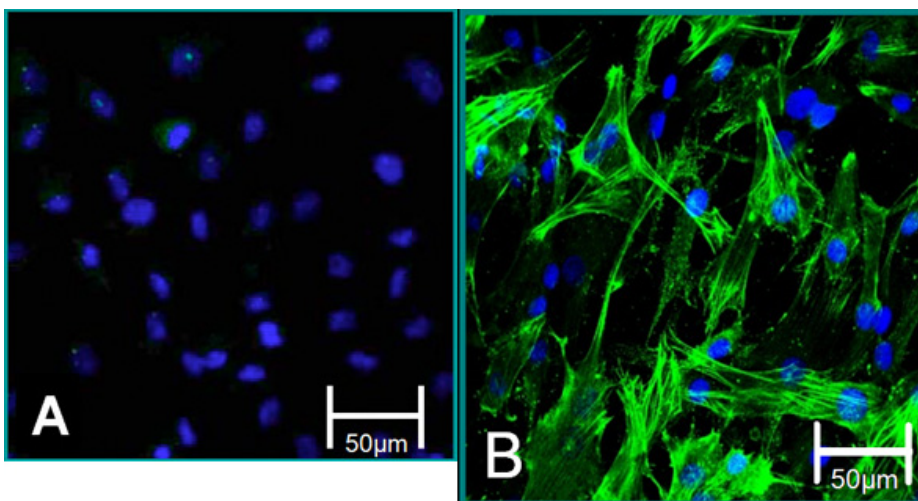


Figure 5. Cellular markers of isolated cells. (A) VEC phenotype is contributed to negative staining for alpha SMA (green), blue (nuclei). (B) VIC phenotype is contributed to positive staining for alpha SMA.

Dissociation Agent	Dissociation Technique	Cell Collection	Cell Quantity	Cell Purity	Contamination
EDTA (3mM) without CaCl ₂	5, 20, 60 min. before CaCl ₂ addition	20, 60, 120 min. before collection	-	+/-	+++
EDTA (6mM) without CaCl ₂	5, 20, 60 min. before CaCl ₂ addition	20, 60, 120 min. before collection	+/-	+	+++
Trypsin-EDTA (0.5 g/L)	5, 10, 15 min. before deactivation	Medium collected immediately	+	+	++
Collagenase II (300 U/ mL)	5, 10, 15 min. before deactivation	Medium collected immediately	-, +, ++	-, ++, +	+
Collagenase II (600 U/ mL)	5, 10, 15 min. before deactivation	Medium collected immediately	+, ++, + ++	++, ++, -	-

Table 1. Results of preliminary valvular endothelial cell isolation protocols.

Discussion

An understanding of valvular biology has been impaired by technical difficulties isolating and culturing pure populations of valvular endothelial cells. Typical isolation techniques involve enzymatic digestion of the underlying basal matrix or chemical dissociation of endothelial adhesive bonds^{2,3}. Preliminary isolation experiments were qualitatively assessed by varying dissociation agents and incubation periods. The results of these experiments showed that EDTA (or Trypsin-EDTA) incubation for up to 60 minutes was unsuccessful at dislodging cells. However, a collagenase digestion for 5-10 minutes proved effective for retrieving a usable number of pure valvular endothelial cells (Table 1). Other enzyme solutions have been suggested such as supplementing with dispase, a metalloprotease capable to specifically target collagen type IV and fibronectin which are main components of the underlying matrix⁴. Liberated cells can be purified through additional processing such as clonal expansion or magnetic selection methods⁵.

Recent evidence has suggested that the aortic valve contains a very heterogeneous distribution of cell types which may lead to difficulties when assessing cellular phenotypes. In contrast to vascular endothelium, VEC should also align perpendicular to the direction of fluid flow⁶. Transcriptional profiles of VEC are dependent upon both the side specificity and mechanical environment. Aortic versus ventricular side endothelium were identified as having distinct endothelial phenotypes *in vivo*. The gene expression profiles suggest that the endothelium on the aortic side valve is prone to calcification side but protected against inflammatory initiation by antioxidative mechanisms⁷. In the presence of shear flow, the endothelial cells down regulated calcific genes such as BMP-4 and POSTN to retain their quiescent phenotype. Shear flow seems to act as a protective measure for endothelial cell types from chondro/osteogenic differentiation, which is a possible explanation of the ventricular endothelial protection⁸.

Clonal isolations from human pulmonary aortic valves have suggested a spectrum of endothelial progenitors exist expressing different amounts of α -SMA, CD144, and CD31. Some were shown to transition to a mesenchymal phenotype, analogous to EMT, specifically in response to TGFB2 at varying degrees⁹. Clonal isolation prove to be an effective way of purifying cell populations, but selects for specific subpopulations that may have phenotypic uniqueness that is not generalizable. This is very important for surface endothelium, as many other cell types are present in nonzero quantities. These include circulating endothelial cells, bone marrow derived cells, and monocytes, all of which can express one or more endothelial-like characteristics^{10, 11}. In addition, clonal isolates undergo many cell divisions to reach suitable cell numbers for experiments, at which point many non-progenitor phenotypes will have senesced or dedifferentiated. Therefore, primary cell isolation such as described here gives the best representation of the native valve endothelial population. The challenge will be to ascertain whether sub-phenotypes that emerge are intrinsic or emerge from differential responses to external stimuli. With this approach, one should be able to determine relative prevalence of each and their consequences in response to specific treatments.

Magnetic sorting methods have also provided a way of purifying cell populations but, are highly dependent upon the antibody labeling conditions and derived cell population. With the ever increasing understanding valve cell populations, endothelial markers such as CD31, CD144, and negative α -SMA may not be sufficient to sort for a pure valvular population. Clonal isolations have proved that endothelial cells contain a wide spectrum of marker expression leading to possible inaccuracies with sorting. When endothelial cells sorted were sorted for CD31, sample purity increased to almost 96%. However, interstitial cells began to reappear in

cultures grown one day post-confluence⁴. Although magnetic sorting is an option, one should consider sorting for additional markers and expression levels such as positive for CAD-11 and negative for periostin⁶.

We provide a method for isolating and culturing pure populations of heart valve endothelial cells (VEC). Using this method, additional processing such as clonal isolation and magnetic selection methods can be eliminated to achieve a representative population of side specific endothelial cells. Cell morphology, functional characteristics, multiple markers, and expression levels should all be considered when assessing the population.

Disclosures

No conflicts of interest declared.

Acknowledgements

This research is supported by the NSF CAREER award, the Hartwell Foundation, and the American Heart Association (#0830384N).

Materials

Name	Company	Catalog Number	Comments
Dulbecco's Modified Eagle Medium	Mediatech, Inc.	50-103-PB	
Fetal Bovine Serum	GIBCO, by Life Technologies	26140	
Penicillin Streptomycin	GIBCO, by Life Technologies	15140-122	
0.25% Trypsin-EDTA	GIBCO, by Life Technologies	25200	
Heparin Sodium Salt	Sigma-Aldrich	H4784-1G	
Collagenase Type 2	Worthington Biochemical	LS004176	
DPBS	GIBCO, by Life Technologies	21300-058	
Rat Tail Collagen	BD Biosciences	354236	
Critical Swabs	VWR international	89031-270	
Sodium Bicarbonate	Sigma-Aldrich	55761	
T25 Flasks	BD Biosciences	353018	
T75 Flasks	BD Biosciences	353136	
24 Well Plate	Falcon BD	353047	
60x15 mm Dishes	VWR international	25384-092	
60x15 Glass Dishes	VWR international	89000-310	
Paraffin Embedding Wax	Electron Microscopy	19304-01	

	Sciences		
Precision Glide Needles	BD Biosciences	305165	
500 mL Nalgene Filters	VWR international	73520-985	
1L Nalgene Filters	VWR international	73520-986	
Tissue Forceps	Fine Science Tools	11023-15	
FSC Tweezers #5	Fine Science Tools	11295-00	

References

1. Thompson, R.P., Fitzharris, T.P. Morphogenesis of the truncus arteriosus of the chick embryo heart: the formation and migration of mesenchymal tissue. *Am J Anat.* 154, 545 556 1979.
2. Johnson, C.M., and Fass, D.N. Porcine cardiac valvular endothelial cells in culture: A relative deficiency of fibronectin synthesis in vitro. *Lab Invest* 49 (5), 589-98 (1983).
3. Manduteanu, I., Popov, D., Radu, A., Simionescu, M. Calf cardiac valvular endothelial cells in culture: production of glycosaminoglycans, prostacyclin and fibronectin. *J Mol Cell Cardiol*, 20 (2), 103-18 (1988).
4. Cheunyg, W. Techniques for isolating and purifying porcine aortic valve endothelial cells. *JHVD.* 17 (6), 674-81 (2008).
5. Paranya, G., Vineberg S., Dvorin, E., Kaushal, S., Roth, S.J., Rabkin, E., Schoen, F.J., Bischoff, J. Aortic valve endothelial cells undergo transforming growth factor-beta-mediated and non-transforming growth factor-beta-mediated transdifferentiation in vitro. *Am J Pathol* 159 (4). 1335-43 (2001).
6. Butcher, J.T., Penrod, A.M., Garcia A.J., Nerem, R.M. Unique morphology and focal adhesion development of valvular endothelial cells in static and fluid flow environments. *Arterioscler Thromb Vasc Bio* 24 (1), 1429-34 (2004).
7. Simmons C.A., Grant G.R., Manduchi E., Davies P.F. Spatial heterogeneity of endothelial phenotypes correlates with side-specific vulnerability to calcification in normal porcine aortic valves. *Circ Res.* 96, 792 9 (2005).
8. Butcher, J.T., Tressel, S., Johnson, T., Turner, D., Sorescu, G., Jo, H., Nerem, R.M. Transcriptional Profiles of Valvular and Vascular Endothelial Cells Reveal Phenotypic Differences: Influence of Shear Stress. *Arterioscler Thromb Vasc Biol*, 26, 69 (2006).
9. Parachuri, S., Yang, J.H., Aikawa, E., Melero-Martin, J.M., Khan, Z.A., Loukogeorgakis, S., Schoen, F.J., Bischoff, J. Human Pulmonary Valve Progenitor Cells Exhibit Endothelial/Mesenchymal Plasticity in Response to Vascular Endothelial Growth Factor-A and Transforming Growth Factor-β2, *Circ Res*, 99 (8), 861-9 (2006).
10. Shi, Q. et al. Evidence for circulating bone marrow-derived endothelial cells. *Blood* 92, 362 367 (1998).
11. Rehman, J., Li, J., Orschell, C.M. & March, K.L. Peripheral blood endothelial progenitor cells are derived from monocyte/macrophages and secrete angiogenic growth factors. *Circulation* 107, 1164-1169 (2003).

Ask the Author

0 Comments

Post a Question / Comment / Request

Your comment (in English, please):

Allowed HTML tags: *i*, *b*, *u*, *sup*, *sub*

You are signed in as [jzacka@worthington-biochem.com](#)

Post Comment

About JoVE

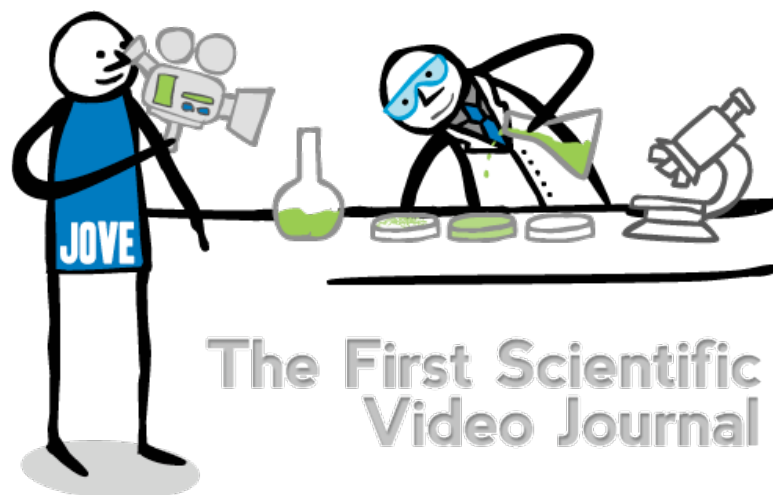
The Journal of Visualized Experiments (JoVE) is a PubMed-indexed video journal. Our mission is to increase the productivity of scientific research.

Follow JoVE

[blog \(http://blog.jove.com\)](http://blog.jove.com) [rss \(/rss\)](#)

[facebook \(http://www.facebook.com/JoVEjournal\)](http://www.facebook.com/JoVEjournal)

[twitter \(http://twitter.com/JoVEjournal\)](http://twitter.com/JoVEjournal) [newsletter](#)



Subscribe (/subscribe)	About (/about)	Editorial Boards (/editorial-boards)	Publish (/publish)	Press (/about/press-releases)
Advertise (http://industry.jove.com)	JoVE Shop (http://shop.jove.com/)	Contact (/about/contact#contact)		Troubleshooting (/about/contact)

Copyright © JoVE 2006-2013. All Rights Reserved. | [Policies \(/policies\)](#) | [License Agreement \(/files/documents/JoVE_library_license_agreement.pdf\)](#) | ISSN 1940-087X
MyJoVE Corp. | 17 Sellers St. | Cambridge, MA | 02139 | tel. 617.945.9051 (tel:617.945.9051)

