

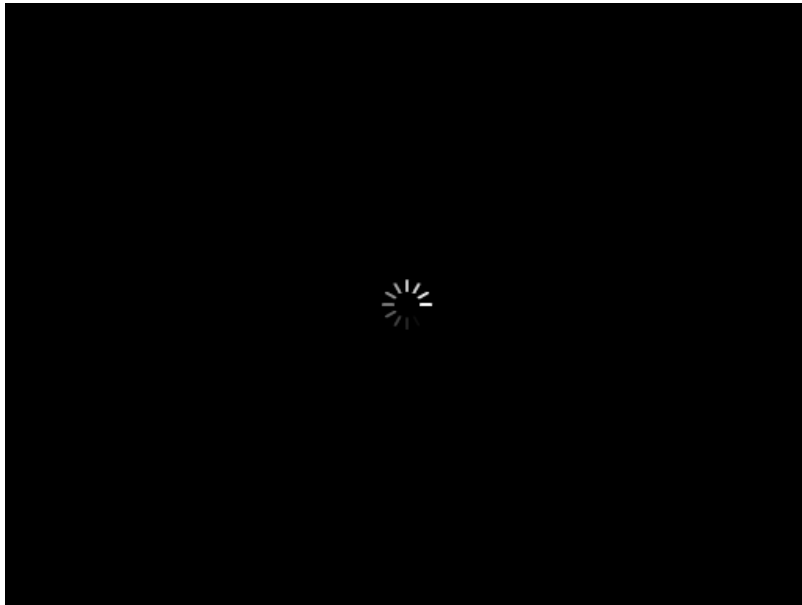


Separate search terms with commas

Search

[Browse -](#)[Sign Out](#)

Serial Enrichment of Spermatogonial Stem and Progenitor Cells (SSCs) in Culture for Derivation of Long-term Adult Mouse SSC Lines

Laura A. Martin (/author/Laura+A._Martin), Marco Seandel (/author/Marco_Seandel)Department of Surgery, **Weill Cornell Medical College** (</institutions/NA-north-america/US-united-states/NY-new-york/24763-cornell-university>)

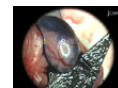
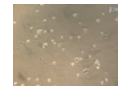
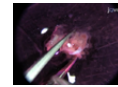
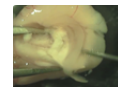
Video Article Chapters

- 0:05 Title
- 1:41 Preparation of Feeder Cells
- 3:54 Dissociation of Mouse Testis Tissue to Obtain Donor Germ Cells
- 6:17 Plating Testicular Suspension and Colony Picking for First Passage
- 9:00 Subsequent Expansion and Passaging of SSCs by Trituration
- 10:13 Representative SSC Culturing Results
- 11:51 Conclusion

You have **full access** to this article through .

1

Related Videos

**Germ Cell Transplantation and Testis Tissue...**
Published 2/06/2012**Isolation and Culture of Post-Natal Mouse...**
Published 1/16/2009**Dissection of Adult Mouse Utricle and...**
Published 3/28/2012**Dissection of Hippocampal Dentate Gyrus from...**
Published 11/17/2009

Cite this Article

Martin, L. A., Seandel, M. Serial Enrichment of Spermatogonial Stem and Progenitor Cells (SSCs) in Culture for Derivation of Long-term Adult Mouse SSC Lines. *J. Vis. Exp.* (72), e50017, doi:10.3791/50017 (2013).

Abstract

Spermatogonial stem and progenitor cells (SSCs) of the testis represent a classic example of adult mammalian stem cells and preserve fertility for nearly the lifetime of the animal. While the precise mechanisms that govern self-renewal and differentiation *in vivo* are challenging to study, various systems have been developed previously to propagate murine SSCs *in vitro* using a combination of specialized culture media and feeder cells¹⁻³.

Most *in vitro* forays into the biology of SSCs have derived cell lines from neonates, possibly due to the difficulty in obtaining adult cell lines⁴. However, the testis continues to mature up until ~5 weeks of age in most mouse strains. In the early post-natal period, dramatic changes occur in the architecture of the testis and in the biology of both somatic and spermatogenic cells, including alterations in expression levels of numerous stem

Download

EndNote, RefWorks, Reference Manager, ProCite
(</legacy/GetRIS.php?id=50017>)

JoVE PDF Article (</pdf/50017>)

Materials List (</pdf-materials/50017>)

XML File (</pdf/default.aspx?ID=50017>)

Information

Date **2/25/2013**
Published

JoVE Section **General (/general)**

JoVE Issue **72 (/archive/72)**

Comments **1 Comment**

View **906 (Details...)**

cell-related genes. Therefore, neonatally-derived SSC lines may not fully recapitulate the biology of adult SSCs that persist after the adult testis has reached a steady state.

Several factors have hindered the production of adult SSC lines historically. First, the proportion of functional stem cells may decrease during adulthood, either due to intrinsic or extrinsic factors^{5,6}. Furthermore, as with other adult stem cells, it has been difficult to enrich SSCs sufficiently from total adult testicular cells without using a combination of immunoselection or other sorting strategies⁷. Commonly employed strategies include the use of cryptorchid mice as a source of donor cells due to a higher ratio of stem cells to other cell types⁸. Based on the hypothesis that removal of somatic cells from the initial culture disrupts interactions with the stem cell niche that are essential for SSC survival, we previously developed methods to derive adult lines that do not require immunoselection or cryptorchid donors but rather employ serial enrichment of SSCs in culture, referred to hereafter as SESC^{2,3}.

The method described below entails a simple procedure for deriving adult SSC lines by dissociating adult donor seminiferous tubules, followed by plating of cells on feeders comprised of a testicular stromal cell line (JK1)³. Through serial passaging, strongly adherent, contaminating non-germ cells are depleted from the culture with concomitant enrichment of SSCs. Cultures produced in this manner contain a mixture of spermatogonia at different stages of differentiation, which contain SSCs, based on long-term self renewal capability. The crux of the SESC method is that it enables SSCs to make the difficult transition from self-renewal *in vivo* to long-term self-renewal *in vitro* in a radically different microenvironment, produces long-term SSC lines, free of contaminating somatic cells, and thereby enables subsequent experimental manipulation of SSCs.

Protocol

1. Preparation of Feeder Cells

Note that all reagents described below should be prepared in sterile fashion (see **Tables 1 & 2**). This protocol employs the JK1 cell line (Cell Biolabs, Inc., catalog #CBA-315) as feeders which is a transformed derivative of adult mouse testicular somatic cells and has been described elsewhere³. Note also that all animal procedures should be performed in accordance with institutional guidelines and regulations.

1. JK1 cells can be maintained in culture and used successfully as feeders up to passage 39. Culture JK1 cells in a 100 mm cell culture dish (BD Falcon, catalog #353003) with 10 ml of filter-sterilized feeder growth medium (DMEM supplemented with 10% fetal bovine serum [FBS], 2 mM L-glutamine and antibiotics). When the culture reaches 95% confluence, split the cells 1:6 -1:10 ratio.
2. Remove medium from confluent JK1 feeder cell monolayer.
3. Wash cell layer once with PBS without calcium and magnesium.
4. Add pre-warmed trypsin/EDTA, 1x (0.05% trypsin/0.53 mM EDTA; Corning Cellgro, catalog #25-051-CI), and incubate at 37 °C for 5-10 min.
5. Inactivate trypsin with an equal volume of feeder growth medium. Collect cells and centrifuge at 300 x g for 5 min. Re-suspend cells in feeder growth medium.
6. Pre-coat multi-well cell culture plates by adding enough 0.4% gelatin solution to cover the well and remove after 5 min at room temperature.
7. Plate ~250 cells per mm² in gelatin-coated cell culture plate (e.g. 48-well or 6-well format). Incubate culture at 37 °C for 16 to 24 hr.

Count
DOI **doi:10.3791/50017**
(<http://dx.doi.org/10.3791>)

Keywords

Stem Cell Biology
(/keyword/stem+cell+biology), Issue 72
(/archive/72), Molecular Biology
(/keyword/molecular+biology), Cellular
Biology (/keyword/cellular+biology),
Medicine (/keyword/medicine), Genetics
(/keyword/genetics), Developmental
Biology
(/keyword/developmental+biology),
Anatomy (/keyword/anatomy), Surgery
(/keyword/surgery), Spermatogonial
Stem cells
(/keyword/spermatogonial+stem+cells),
Stem cells (/keyword/stem+cells), feeder
cells (/keyword/feeder+cells), germ cells
(/keyword/germ+cells), testis
(/keyword/testis), cell culture
(/keyword/cell+culture),
microenvironment
(/keyword/microenvironment), stem cell
niche (/keyword/stem+cell+niche),
progenitor cells
(/keyword/progenitor+cells), mice
(/keyword/mice), transgenic mice
(/keyword/transgenic+mice), animal
model (/keyword/animal+model)

Translate this page to:

Choose Language...

Navigate this Article

Cite this article
Abstract
Protocol
Representative results
Discussion
Disclosures
Acknowledgements
Materials
References
Ask the author
Top of page

8. Remove culture medium from wells. CAUTION: To inactivate cell growth, add a fresh solution of mitomycin-C at 10 µg/ml diluted in DMEM to each well (e.g. 200 µl/well for a 48 well plate). Mitomycin-C is toxic. Handle and dispose of it with care. Incubate at 37 °C for 4 hr.
9. Remove mitomycin-C solution from cells. Wash 3 times with DMEM prior to plating stem cells.
10. Remove DMEM from feeder cells wells and add enough stem cell medium (100 µl/ well of a 48 well plate; see **Table 3**) to prevent desiccation of the feeders during passaging. Add SSCs the same day, as described below in sections 3.1 or 3.4, using indicated sizes of wells containing feeders.

2. Dissociation of Mouse Testis Tissue to Obtain Donor Germ Cells

1. Harvest adult mouse testes in sterile fashion and temporarily store the testes in a covered Petri dish (without any liquid added). The dish must be placed immediately on ice to prevent desiccation and maintain cell viability.
2. Using sterile fine forceps and a fine scissor in a cell culture hood, make a transverse incision in the tunica albuginea without completely transecting the testis (i.e., cut ~1/2-3/4 distance through) and use forceps to squeeze out seminiferous tubules into a corner of the plate; discard tunica and attached tissue. Keep plate on ice throughout to keep tissue chilled, thereby maintaining its integrity and preventing evaporation.
3. Rapidly mince tubules with fine spring scissors at least 3 min per testis, while keeping plate on ice.
4. Collect the tubule fragments in a 50 ml conical tube and wash in ~40 ml of chilled PBS/1% bovine serum albumin.
5. Centrifuge at 60 x g for 10 min to separate tubule fragments from spermatozoa and debris. Discard supernatant.
6. In a 15 ml conical tube, resuspend the pellet in 3 ml per testis of pre-warmed dissociation buffer (DMEM, 0.05% Trypsin, 0.03% Collagenase type I, 80 U/ml of DNase I and 0.5% bovine serum albumin; See **Table 2** for more specific details of dissociation buffer).
7. Place the conical tube horizontally in a rack in a shaker set to 150 rpm at 37 °C for 15 min to maximize agitation.
8. Spin down at 60 x g for 10 min to separate single cells from undissociated chunks.
9. Save the pellet containing chunks until the next step. Collect supernatant from Step 2.8 and add 3 ml DMEM/10% fetal bovine serum to neutralize dissociation buffer. Place tube on ice temporarily.
10. Repeat step 2.6 to 2.7 with the saved pellet from step 2.9 to re-digest chunks remaining after step 2.8.
11. Add an equal volume of DMEM/10% FBS to neutralize dissociation buffer.
12. Recombine suspension from step 2.11 with saved cell suspension from step 2.9. Centrifuge for 5 min at 300 x g.
13. Resuspend pellet in stem cell medium in a volume of 16 ml per pair of testes (see **Table 3**).

3. Plating of Testicular Cell Suspension

1. Plate 2 ml of cell suspension per well in a 6-well plate containing feeder cells mitotically-inactivated with mitomycin-C and place in a cell culture incubator at 37 °C in 5% CO₂.
2. After 48 hr, aspirate medium, add 2 ml fresh medium and return to incubator.
3. After 48 hr, add 0.5 ml fresh stem cell medium to each well and return to incubator.
4. After 48 hr, subsequently feed cells three times per week thereafter as follows until large, discrete colonies (>50 cells) appear (within 7 to 21 days). For first and second feeding each week (e.g. Monday and Wednesday) remove ~50% of the medium and add back 50% by volume of fresh medium. For third

feeding (e.g. Friday), aspirate all medium and replace with 2 ml fresh medium. This approach is based on the rationale that avoidance of complete medium changes minimizes fluctuations in concentrations of paracrine signals that are secreted into the culture medium⁹.

4. Colony Picking for First Passage

1. Remove medium from wells containing colonies to be passaged and add fresh stem cell medium.
2. Identify colonies using a 10x objective. With the microscope slightly de-focused, SSC colonies at the edge of the well will appear as homogeneous bright clumps, comprised of many 11-12 μm diameter cells, in which it is difficult or impossible to discern the individual cell borders, since the cells appear fused together (**Figure 1A**). Non-SSC colonies may appear darker, more granular, or less homogenous, with discernable borders (**Figure 1A**, inset).
3. Using a 200 μl pipette tip, with the pipette set to 50 μl , first take up medium from the well and expel to wet the tip. Then, gently nudge the colony with the tip before rapidly withdrawing 50 μl of medium to dislodge the colony by suction into the tip (**Figure 1B**).
4. Expel the medium containing the colony into one well of a 48-well plate containing inactivated feeder cells with 100 μl of stem cell medium (**Figure 1C**).
5. Repeat step 4.3 and add up to 8 colonies to the same well without exceeding 500 μl per well.
6. Repeat steps 4.3 to 4.5 to prepare additional wells of the 48 well plate with passage one SSC colonies.
7. Wells will be ready to split in 7-14 days or after large clumps of up to 500 cells have emerged (**Figure 1D**).

5. Subsequent Expansion and Passaging of SSCs by Trituration

1. Cells at passage one should be subcultured onto fresh feeders after up to 14 days at a split ratio of 1:2 for the first 3 passages and then 1:4 to 1:6 (every 7 days) thereafter as follows. Gently triturate colonies off a semi-confluent well (e.g. $\sim 300,000$ SSCs/well of 6-well plate) with a 1 ml pipette tip by washing medium across the cells. Colonies can be seen detaching. Too much force with the stream of liquid will cause unwanted feeder cells to come off too.
2. Collect triturated cells in a conical tube and centrifuge at 300 x g for 5 min. Note: A trypsinization step may be safely added here if desired by the investigator.
3. Aspirate supernatant and re-suspend in fresh stem cell medium by thoroughly pipetting up and down to disrupt colonies.
4. Plate SSCs on freshly prepared feeder cells inactivated with mitomycin-C as described in section 1.
5. Feed cells three times per week as follows. For first and second feeding (e.g. Monday and Wednesday) add 50% by volume of fresh medium. For third feeding (e.g. Friday), aspirate all medium and replace with 2 ml fresh medium. Plates will become confluent in 7-10 days. Cultures should be comprised of >98% germ cells (i.e., <1% contaminating somatic cells) after 5-7 passages, based on immunostaining (e.g. using the murine germ cell marker GCNA) to distinguish germ cells from somatic cells¹⁰. Note: These methods were developed in compliance with regulations and requirements set forth by the Institutional Animal Care and Use Committee at Weill Cornell Medical College.

Representative Results

The appearance of passage zero wild type, adult SSC colonies after 7 days is shown in **Figure 1**. Three-dimensional colonies are comprised of a layer of flat cells attached to the feeders or underlying extracellular

matrix deposited by the feeders with multiple layers of SSCs growing on top. While healthy SSCs are brightly refractile and uniformly 11-12 μm diameter, the cell borders are difficult to distinguish and the size of the colonies may be highly variable, both within the well and between wells prepared from different mice. Visualization of the colonies is aided by a phase microscope with a digital display and a slightly de-focused focal plane, which enhances the contrast between highly homogeneous SSC colonies and contaminating somatic cells which are present in early passage (0-2) cultures and do not form tightly packed colonies (see **Figure 1A** inset). Note that the morphology of the feeder cells will change gradually after switching from DMEM/10% to stem cell culture medium after inactivation with mitomycin-C. It is also important to note that the initial cell suspension is not filtered or strained, because residual clumps of somatic cells are thought to enhance survival of SSCs at the time of initial plating and should not be removed until SSC colonies are established. Serial passaging (>5-7 times) is required to purify the germ cells to near homogeneity (>98%) and deplete residual somatic cells. If subsequent experiments will specifically require enrichment of stem cells from the total population of germ cells in the culture, then cell selection using immunomagnetic beads or flow cytometry can be employed for further purification; for example, stem cell enrichment can be obtained using antibodies against Thy1, CD9, $\alpha 6$ integrin and others¹¹. The identity of SSCs should be subsequently confirmed using immunophenotyping, gene expression, and by transplantation, since transplantation analysis is the only means to definitively assess the quantity of authentic, functional stem cells^{12,13}.

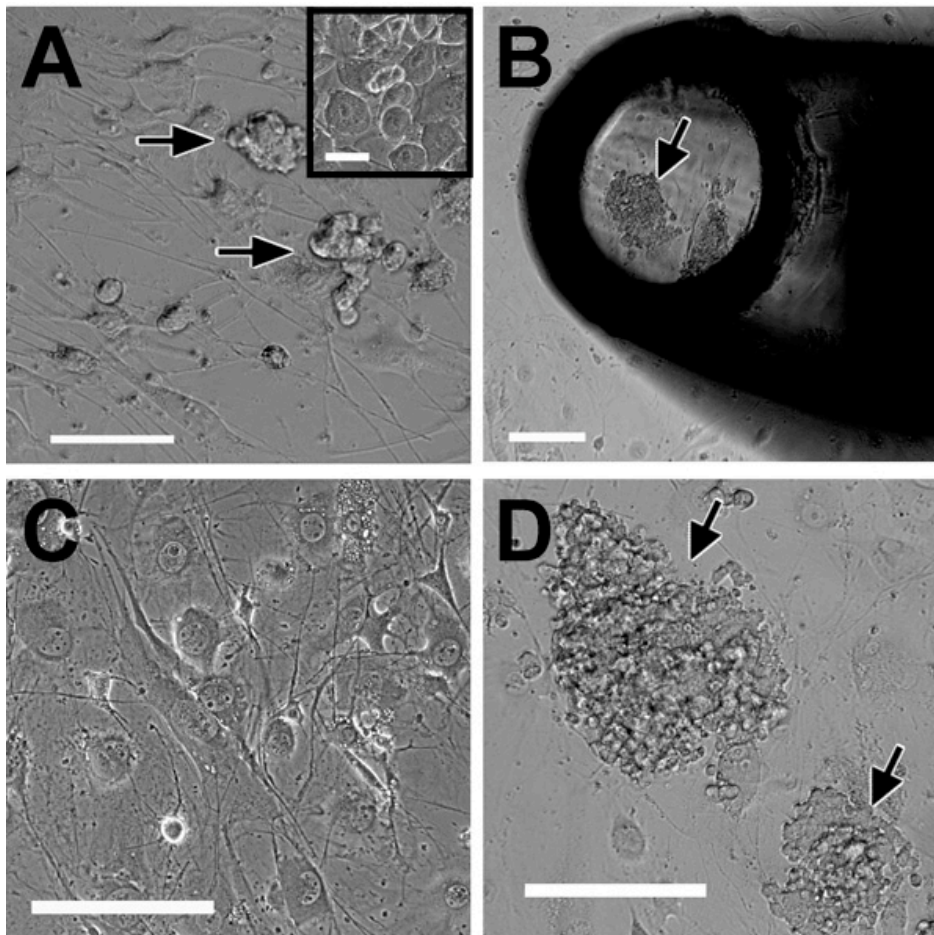


Figure 1. Morphology of early SSC colonies, testicular stromal cells and feeders. **A**, Appearance of nascent SSC colonies ~5 days after initial plating. Inset shows contaminating monocyte-like somatic cells in a passage zero culture. **B**, Selection and picking of individual colonies for first passage (~14 days) into 48-well plates. The black structure is the pipette tip. **C**, Appearance of inactivated JK1 feeder cells. **D**, Large colonies prior to routine subculturing. Arrows indicate SSC colonies. Scale bar in A is 100 μm (inset, 50 μm) and in B-D

is 200 µm.

Discussion

This method for deriving adult SSCs using adult testis-derived feeder cells is robust and has succeeded when common genetic backgrounds (e.g. FVB, C57Bl6 and mixed 129SV/C57Bl/6) and different mutant strains were employed^{2,3,7,14}. In fact, the microenvironment created by the culture system is sufficient to overcome some of the genetic barriers to maintaining adult SSCs *in vivo* (e.g. in the case of *plzf*^{-/-} animals)⁷. While we employ JK1 cells as feeders, non-transformed adult testicular somatic cells can also be used with equal efficacy as JK1 cells^{2,3}.

SESC was designed to efficiently obtain long-term adult SSC lines. Unfortunately, the high efficiency is achieved with a trade-off for the following reason. A notable limitation of the procedure is that the omission of a filtering or straining step at the time of initial plating and the manipulation that the procedure involves, which can affect cell survival, may cause substantial variability in cell numbers plated from well to well, which precludes effective quantitation at the stage of initial colony formation. However, quantitative assays can be performed with slightly later passage cultures at which time a single cell suspension can be easily prepared by standard trypsinization (>passage 5-7).

Because adult SSCs in culture can be expanded and maintained almost indefinitely, this protocol enables the efficient production of cell lines that can be used subsequently in a similar fashion to other established primary cultures or cell lines (*i.e.* gene and protein expression analyses or ectopic expression of a gene of interest). Nonetheless, it is essential to ultimately confirm results using transplantation analysis as the gold standard or another validated surrogate assay, such as the SSC cluster formation assay^{12,15}.

Disclosures

M.S. receives royalties from Weill Cornell Medical College through a license to Cell Biolabs, Inc. to distribute JK1 cells.

Acknowledgements

This work was supported by the New York State Department of Health (C026878). M.S. was a New York Stem Cell Foundation-Druckenmiller Fellow. Supported in Part by Research Grant No. 5-FY11-571 from the March of Dimes Foundation.

Materials

Name	Company	Catalog Number	Comments
DMEM	Corning	10-013	Diluent for dissociation buffer
Trypsin/EDTA	Mediatech	25-051-CI	
Stem cell base medium (StemPro-34)	Life Technologies	10639-011	Requires supplementation as per Shinohara <i>et al.</i> (2003)*

Stem cell medium supplements	various	see Table 3	Requires supplementation as per Shinohara <i>et al.</i> (2003)*
JK1 cells	Cell Biolabs, Inc.	CBA-315	Can substitute with adult testicular stromal cells as per Seandel <i>et al.</i> (2007)
mitomycin-C (CAUTION)	Sigma-Aldrich	M4287	Toxic; Handle with care.
Gelatin	Sigma-Aldrich	G1890	0.4% solution in water
EVOS xl digital inverted microscope	Advanced Microscopy Group	-	

Table 1. Specific reagents and equipment.

*See Table 3

DMEM	Corning	10-013	Diluent for dissociation buffer
trypsin (1:250)	Life Technologies	27250-018	Dissociation buffer: Final 0.05% wt/vol
collagenase, type I, 235 U/ml	Worthington	CLS1 235	Dissociation buffer: Final 0.03% wt/vol
DNase I	Sigma-Aldrich	DN25	Dissociation buffer: Final 80 U/ml
bovine serum albumin	ICP Bio	ABRE-100g	Dissociation buffer: Final 0.5% wt/vol

Table 2. Dissociation buffer

StemPro-34 SFM	Life Technologies	10639-011	
StemPro-34 Nutrient supplement	Life Technologies	10639-011	
Additional supplements**			
Non-essential amino acids	Sigma-Aldrich	M7145	1X
MEM Vitamin solution	Life Technologies	11120-052	1X
L-glutamine	Mediatech	25-005	2 mM
bovine serum albumin	ICP Bio	ABRE	0.50%
Antibiotic-Antimycotic Solution	Mediatech	30-004-CI	1X
D(+)-glucose	Sigma-Aldrich	G8769	6 mg/ml
β -estradiol	Sigma-Aldrich	E2758	30 ng/ml
progesterone	Calbiochem	5341	60 ng/ml
fetal bovine serum	variable	n/a	1%
bovine holo-transferrin	Sigma-Aldrich	T1283	100 μ g/ml
insulin	Gemini Bio-Products	700-112P	25 μ g/ml

human GDNF	Life Technologies	PHC7041	10 ng/ml
human bFGF	Life Technologies	PHG0023	10 ng/ml
mouse EGF	Life Technologies	PHG0313	20 ng/ml
putrescine	Research Organics	0778P	60 μ M
sodium Selenite	Sigma-Aldrich	S5261	30 nM
pyruvic acid	Alfa Aesar	A13875	30 μ g/ml
DL-lactic acid	J.T. Baker	0196-04	1 μ g/ml
β -mercaptoethanol	Life Technologies	21985-023	50 μ M
ascorbic acid	Sigma-Aldrich	A4544	100 μ M
D-biotin	Sigma-Aldrich	B4639	10 μ g/ml

Table 3. Stem cell medium

***Note:** Add supplements below before using medium. Filter sterilize and keep it at 4 °C. The medium is stable for at least 2 weeks.

****We have employed different manufacturers, formulations, and/or lot numbers of these reagents without any apparent deleterious effects. In general, cell culture grade reagents should be employed.**

References

1. Kanatsu-Shinohara, M., *et al.* Long-term proliferation in culture and germline transmission of mouse male germline stem cells. *Biol. Reprod.* **69**, 612-616 (2003).
2. Seandel, M., *et al.* Generation of functional multipotent adult stem cells from GPR125+ germline progenitors. *Nature.* **449**, 346-350 (2007).
3. Kim, J., Seandel, M., Falciatori, I., Wen, D., & Rafii, S. CD34+ testicular stromal cells support long-term expansion of embryonic and adult stem and progenitor cells. *Stem Cells.* **26**, 2516-2522, doi:10.1634/stemcells.2008-0379 (2008).
4. Ogawa, T., *et al.* Derivation and morphological characterization of mouse spermatogonial stem cell lines. *Arch. Histol. Cytol.* **67**, 297-306 (2004).
5. Schmidt, J.A., *et al.* *In vivo* and *in vitro* aging is detrimental to mouse spermatogonial stem cell function. *Biology of Reproduction.* **84**, 698-706, doi:10.1095/biolreprod.110.088229 (2011).
6. Zhang, X., Ebata, K. T., Robaire, B., & Nagano, M. C. Aging of male germ line stem cells in mice. *Biology of Reproduction.* **74**, 119-124, doi:10.1095/biolreprod.105.045591 (2006).
7. Hobbs, R.M., Seandel, M., Falciatori, I., Rafii, S., & Pandolfi, P.P. Plzf regulates germline progenitor selfrenewal by opposing mTORC1. *Cell.* **142**, 468-479 (2010).
8. Nagano, M., Ryu, B.Y., Brinster, C.J., Avarbock, M.R., & Brinster, R.L. Maintenance of mouse male germ line stem cells *in vitro*. *Biol. Reprod.* **68**, 2207-2214 (2003).
9. Csaszar, E., *et al.* Rapid expansion of human hematopoietic stem cells by automated control of inhibitory feedback signaling. *Cell Stem Cell.* **10**, 218-229, doi:10.1016/j.stem.2012.01.003 (2012).
10. Enders, G.C. & May, J.J. Developmentally regulated expression of a mouse germ cell nuclear antigen examined from embryonic day 11 to adult in male and female mice. *Dev. Biol.* **163**, 331-340 (1994).
11. Oatley, J.M. & Brinster, R.L. Regulation of spermatogonial stem cell self-renewal in mammals. *Annu Rev Cell Dev Biol.* **24**, 263-286, doi:10.1146/annurev.cellbio.24.110707.175355 (2008).

12. Brinster, R.L. & Zimmermann, J.W. Spermatogenesis following male germ-cell transplantation. *Proc Natl Acad Sci U.S.A.* **91**, 11298-11302 (1994).
13. Tang, L., Rodriguez-Sosa, J.R., & Dobrinski, I. Germ Cell Transplantation and Testis Tissue Xenografting in Mice. *J. Vis. Exp.* (60), e3545, doi:10.3791/3545 (2012).
14. Arnold, K., *et al.* Sox2(+) adult stem and progenitor cells are important for tissue regeneration and survival of mice. *Cell Stem Cell.* **9**, 317-329, doi:10.1016/j.stem.2011.09.001 (2011).
15. Yeh, J. R., Zhang, X., & Nagano, M. C. Establishment of a short-term *in vitro* assay for mouse spermatogonial stem cells. *Biology of Reproduction.* **77**, 897-904, doi:10.1095/biolreprod.107.063057 (2007).

Ask the Author

1 Comment

Hello, I'm a graduate student from University of Science and Technology of China, college of life science. Our lab wants to do some research about SSCs. It's my honor to find this article of yours which may be very usefull for me. So I want to learn from this article. Shoud you send this article(pdf version) for me ? Your kindly help will be appreciated. Thank you very much and best wishes!

1 (/video/50017/serial-enrichment-spermatogonial-stem-progenitor-

Post a Question / Comment / Request

Your comment (in English, please):

Allowed HTML tags: *i*, *b*, *u*, *sup*, *sub*

You are signed in as jzacka@worthington-biochem.com

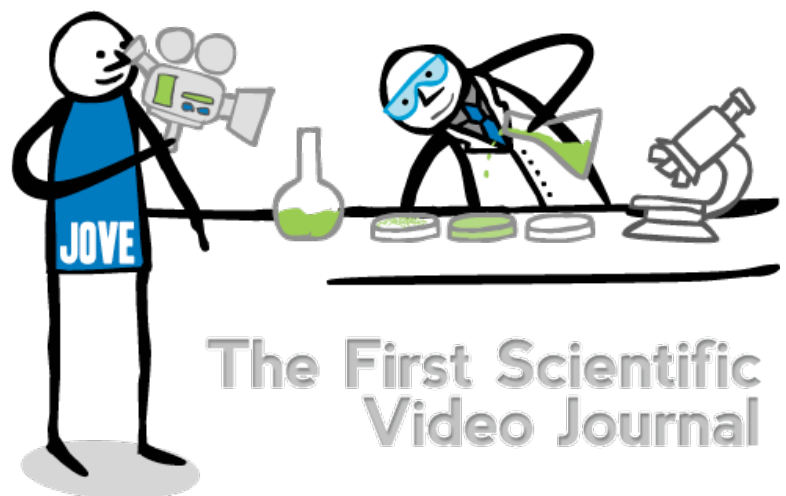
Post Comment

About JoVE

The Journal of Visualized Experiments (JoVE) is a PubMed-indexed video journal. Our mission is to increase the productivity of scientific research.

Follow JoVE

blog (<http://blog.jove.com>) rss ([/rss](#))



[facebook \(http://www.facebook.com/JoVEjournal\)](http://www.facebook.com/JoVEjournal)

[twitter \(http://twitter.com/JoVEjournal\)](http://twitter.com/JoVEjournal) [newsletter](#)

[Subscribe \(/subscribe\)](#) [About \(/about\)](#) [Editorial Boards \(/editorial-boards\)](#) [Publish \(/publish\)](#) [Press \(/about/press-releases\)](#)
[Advertise \(http://industry.jove.com\)](http://industry.jove.com) [JoVE Shop \(http://shop.jove.com/\)](http://shop.jove.com/) [Contact \(/about/contact#contact\)](#) [Troubleshooting \(/about/contact\)](#)

Copyright © JoVE 2006-2013. All Rights Reserved. | [Policies \(/policies\)](#) | [License Agreement \(/files/documents/JoVE_library_license_agreement.pdf\)](#) | ISSN 1940-087X
MyJoVE Corp. | 17 Sellers St. | Cambridge, MA | 02139 | tel. 617.945.9051 (tel:617.945.9051)